

June 24, 2024

Totally Cool, Inc., Recalls All Ice Cream Products Because of Possible Health Risk

Brand	Product	Affected Lots
Friendly's	60 fl oz Celebration Ice Cream Cake 40 fl oz Strawberry Krunch Ice Cream Cake	All Dates Between 05/20/2024 to 05/28/2025 With Plant Code: 24-65, 24-0065, 2465, 240065
Abilyn's Frozen Bakery	Abilyn's Frozen Bakery Vanilla & Chocolate 30 fl oz 6" Ice Cream Cake Abilyn's Frozen Bakery Vanilla & Chocolate 60 fl oz 8" Ice Cream Cake Abilyn's Frozen Bakery "For Love of Chocolate" Ice Cream Cake Abilyn's Frozen Bakery "Cookies & Cream" Ice Cream Cake Abilyn's Frozen Bakery "Cookie Dough" Ice Cream Cake	All Best By Dates Between: 05/20/2024 to 05/28/2025

Hershey's Ice cream	<p>38 fl oz vanilla and chocolate flavored ice cream cake</p> <p>110 fl oz vanilla and chocolate flavored ice cream cake</p> <p>4 fl oz Cookies & Cream Ice Cream Cones</p> <p>4 fl oz Cookies & Cream Polar Bear Ice Cream Sandwiches</p>	<p>All Codes Between:</p> <p>Cakes: 2305140 to 2405170</p> <p>Cones: 3174 to 4047</p> <p>Sandwiches: 2307187 to 2406163</p> <p>With Plant Code: 24-65, 24-0065, 2465, 240065</p>
---------------------	--	---

Yelloh!	<p>4 fl oz Vanilla Nut Ice Cream Sundae Cones</p> <p>4 fl oz Vanilla Fudge Ice Cream Sundae Cones</p> <p>4 fl oz Pecan Praline Ice Cream Sundae Cones</p> <p>4 fl oz Chip & Mint Ice Cream Sundae Cones</p> <p>4 fl oz Cookies & Cream Ice Cream Sandwiches</p>	<p>All Codes Between:</p> <p>Cones: 6T3227 to 6T4157</p> <p>Sandwiches: 6T3115 to 6T4171</p>
	<p>4 fl oz Chocolate Chip Ice Cream Sandwiches</p>	
Jeni's	<p>3.5 fl oz Chocolate Silk Pie Ice Cream Sandwiches</p> <p>3.5 fl oz Key Lime Pie Frozen Dessert</p> <p>3.5 fl oz Mint Chocolate Truffle Pie Ice Cream Sandwiches</p> <p>3.5 fl oz Triple Berry Tart Pie Ice Cream Sandwiches</p>	<p>All Codes Between:</p> <p>23205 to 24144</p> <p>With Plant Code: 24-65, 24-0065, 2465, 240065</p>

Cumberland Farms	<p>Cumberland Farms, Farmhouse Premium Ice Cream Sandwich, Rich Vanilla, 4 fl oz</p> <p>Cumberland Farms, Farmhouse Premium Ice Cream Sandwich, Marvelous Mint, 4 fl oz</p>	<p>All Codes Between: 113025 to 120425</p>
------------------	---	--

The Frozen Farmer	<p>4 fl oz Elf On the Shelf Santa`s Cookies Ice Cream Sandwiches</p> <p>16 fl oz Elf On the Shelf Santa`s Cookies</p> <p>16 fl oz Strawberry Sorbet Pints</p> <p>16 fl oz Raspberry Sorbet Pints</p> <p>16 fl oz Orange Cream Frobert Pints</p> <p>16 fl oz Watermelon Sorbet Pints</p>	<p>All Codes Between: Sandwiches: 090425 to 120725 Pints: 090525 to 073026</p> <p>With Plant Code: 24-65, 24-0065, 2465, 240065</p>
-------------------	---	--

<p>Marco</p>	<p>3.8 fl oz Dulce De Leche Ice Cream Sandwiches</p> <p>3.8 fl oz Vanilla Chai Ice Cream Sandwiches</p> <p>16 fl oz Dulce De Leche & Cookies Ice Cream Pints</p> <p>16 fl oz Turkish Mocha Ice Cream Pints</p> <p>16 fl oz Vanilla Chai Ice Cream Pints</p> <p>16 fl oz Spicy Peanut Butter Caramel and Peanut Butter Caramel Ice Cream Pints</p> <p>16 fl oz Moroccan Honey Nut Ice Cream Pints</p> <p>16 fl oz Green Tea White Chocolate Ice Cream Pints</p> <p>16 fl oz Aztec Chocolate Ice Cream Pints</p>	<p>All Codes Between:</p> <p>Sandwiches: 112825 to 112925</p> <p>Pints: 060724 to 121125</p> <p>With Plant Code: 24-65, 24-0065, 2465, 240065</p>
--------------	--	--

<p>ChipWich</p>	<p>4 fl oz The Original Vanilla Chocolate Chip Ice Cream Sandwich 10 Club Pack, 3 Pack, 24 Pack</p> <p>16 fl oz Vanilla Chocolate Chip Ice Cream Pint</p> <p>16 fl oz Mint Chocolate Chip Ice Cream Pint</p>	<p>All Codes Between:</p> <p>Sandwiches:</p> <p>Best by dates: 022325 to 122125</p> <ul style="list-style-type: none"> • Club pack (10 units): Lot# 23298-24172 • Single Serve: Lot# 23298-24164 • 3 packs: Lot# 23298-24136 <p>Pints: 072524 to 012725</p> <p>With Plant Code: 24-65, 24-0065, 2465, 240065</p>
-----------------	--	---

AMAFruits	3 gal Acai Sorbet Tubs 3 gal Dragon Fruit Sorbet Tubs	All Codes: 32824, 32924, 33024,50125,50225 50325 50425 62725 62825 62925 63025 60125 72825 82825 82925 83125 90525 2311324
		2311325 2311326 2311331 2311332 2311333 2311334 2401031 2401032 2401033 2401036 2401037 2401038 2401039 2401040 2402043 2402044 2402057 2402058 402059 2403085 2403086 2403087 2403088 2404120 2404121 2405142 2406158 2406159 With Plant Code: 24-65, 24-0065, 2465, 240065

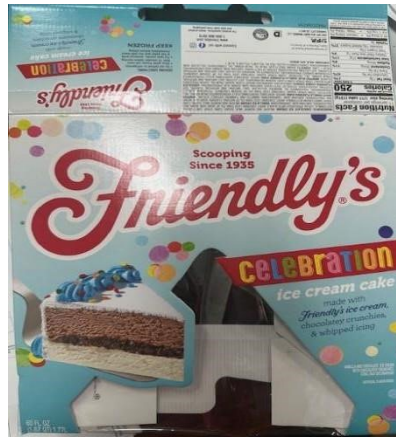
Taharka	16 fl oz Honey Graham Ice Cream Pints 16 fl oz Key Lime Pie Ice Cream Pints	Code: 100125 With Plant Code: 24-65, 24-0065, 2465, 240065
---------	--	---

Dolcezza Gelato	16 fl oz Mascarpone & Berries Ice Cream Pints 16 fl oz Roasted Strawberry Ice Cream Pints 16 fl oz Vanilla Bean Ice Cream Pints 16 fl oz Peanut Butter Mash and Peanut Butter Cup Ice Cream Pints 16 fl oz Dulce de Leche & Cookies Ice Cream Pints 16 fl oz Stracciatella Ice Cream Pints	All Codes Between: 052024 to 062025 With Plant Code: 24-65, 24-0065, 2465, 240065
	16 fl oz Peanut Stracciatella Ice Cream Pints 16 fl oz Swiss Chocolate Ice Cream Pints 16 fl oz Coffee & Cookies Ice Cream Pints 16 fl oz Hot Cocoa Ice Cream Pints 16 fl oz Sugar Cookie Dough Ice Cream Pints 16 fl oz Dark Chocolate Ice Cream Pints 16 fl oz Dark Chocolate Fudge Ice Cream Pints	
LaSalle	16 fl oz Chocolate Ice Cream Pints	All Codes Between: 111824 to 102525

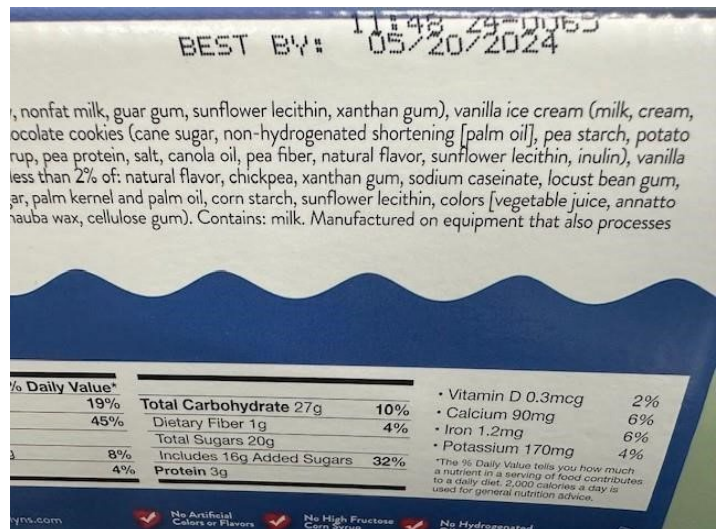
	16 fl oz Vanilla Ice Cream Pints 16 fl oz Cherry Vanilla Ice Cream Pints 16 fl oz Vanilla Mango Ice Cream Pints 16 fl oz Vanilla Raspberry Ice Cream Pints 16 fl oz Vanilla Fudge Ice Cream Pints 16 fl oz Dulce De Leche Ice Cream Pints 16 fl oz Cookies & Cream Ice Cream Pints	With Plant Code: 24-65, 24-0065, 2465, 240065
	16 fl oz Butter Pecan Ice Cream Pints	

Example Photographs

Friendly's Products



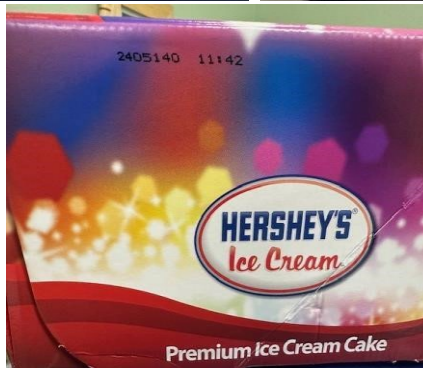
Abilyn's Frozen Bakery Products



<p>REAL INGREDIENTS</p> <p>ABILYN'S Frozen Bakery</p> <p>Ice Cream Cake</p> <p>Cookies 'n Cream</p> <p>as always, Gluten FREE</p> <p>No Artificial Colors or Flavors No High Fructose Corn Syrup No Hydrogenated Oils</p> <p>Serves 8 - 10 (4 oz) (147g) & (16g) Best if consumed 21-30 minutes before serving.</p>	<p>REAL INGREDIENTS</p> <p>ABILYN'S Frozen Bakery</p> <p>Ice Cream Cake</p> <p>Chocolate Chip Cookie Dough</p> <p>as always, Gluten FREE</p> <p>No Artificial Colors or Flavors No High Fructose Corn Syrup No Hydrogenated Oils</p> <p>Serves 8 - 10 (4 oz) (147g) & (16g) Best if consumed 21-30 minutes before serving.</p>
<p>ABILYN'S Frozen Bakery</p> <p>Ice Cream Cake</p> <p>Cookies 'n Cream</p> <p>as always, Gluten FREE</p> <p>Look at all that GOODNESS!</p> <p>REAL INGREDIENTS</p> 	<p>ABILYN'S Frozen Bakery</p> <p>Ice Cream Cake</p> <p>Chocolate Chip Cookie Dough</p> <p>as always, Gluten FREE</p> <p>Look at all that GOODNESS!</p> <p>REAL INGREDIENTS</p> 

<p>REAL INGREDIENTS</p> <p>ABILYN'S Frozen Bakery</p> <p>Ice Cream Cake</p> <p>For the Love of Chocolate</p> <p>as always, Gluten FREE</p> <p>No Artificial Colors or Flavors No High Fructose Corn Syrup No Hydrogenated Oils</p> <p>Serves 8 - 10 (4 oz) (147g) & (16g) Best if consumed 21-30 minutes before serving.</p>	<p>REAL INGREDIENTS</p> <p>ABILYN'S Frozen Bakery</p> <p>Ice Cream Cake</p> <p>Vanilla & Chocolate</p> <p>as always, Gluten FREE</p> <p>No Artificial Colors or Flavors No High Fructose Corn Syrup No Hydrogenated Oils</p> <p>Serves 8 - 10 (4 oz) (147g) & (16g) Best if consumed 21-30 minutes before serving.</p>
<p>ABILYN'S Frozen Bakery</p> <p>Ice Cream Cake</p> <p>For the Love of Chocolate</p> <p>as always, Gluten FREE</p> <p>Look at all that GOODNESS!</p> <p>REAL INGREDIENTS</p> 	<p>ABILYN'S Frozen Bakery</p> <p>Ice Cream Cake</p> <p>Vanilla & Chocolate</p> <p>as always, Gluten FREE</p> <p>Look at all that GOODNESS!</p> <p>REAL INGREDIENTS</p> 

Hershey's Products

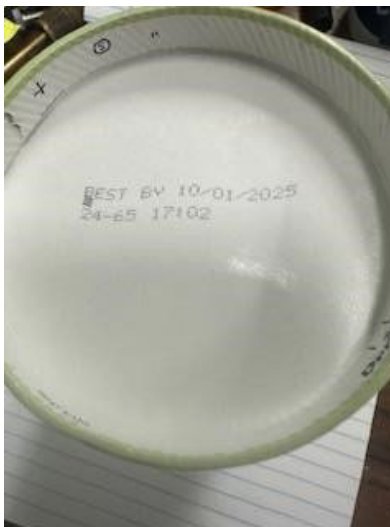


Cumberland Products





Taharka Products

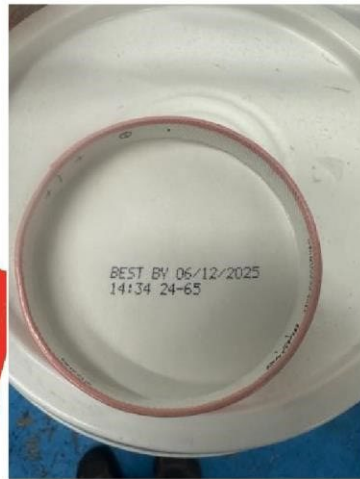
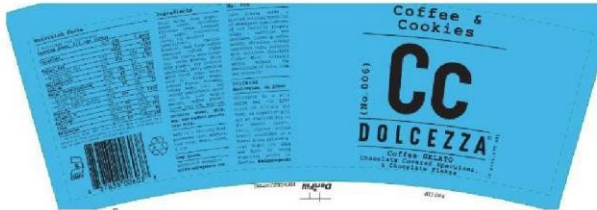
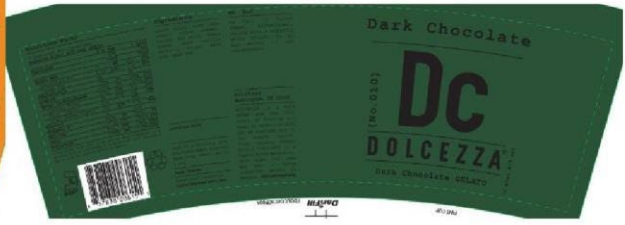
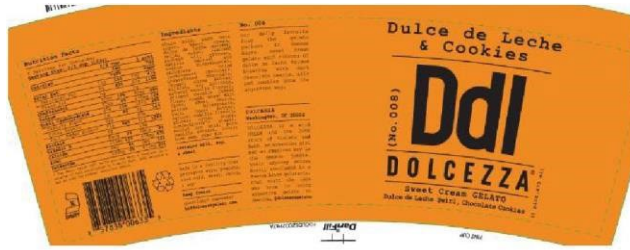


AMAFruits Products



Dolcezza Products





The Frozen Farmer Products



Marco Products





Jeni's Products



Yelloh! Products

 <p>Pecan SUNDAE CONES</p> <p>Vanilla ice cream swirled with caramel and topped with praline pecans in a chocolatey lined sugar cone</p> <p>49.8 FL. OZ. (1.47L)</p> <p>NO ARTIFICIAL FLAVORS COLORED FROM NATURAL SOURCES MADE WITH REAL CREAM</p> <p>Yelloh!</p> <p>CONES: 11 CONES NET WT 4.9 LB</p>	 <p>Chip & Mint SUNDAE CONES</p> <p>Mint ice cream swirled with fudge and topped with chocolate chips in a chocolatey lined sugar cone</p> <p>49.8 FL. OZ. (1.47L)</p> <p>NO ARTIFICIAL FLAVORS COLORED FROM NATURAL SOURCES MADE WITH REAL CREAM</p> <p>Yelloh!</p> <p>CONES: 11 CONES NET WT 4.9 LB</p>
<p>DATE CODE AREA</p>   <p>NO ARTIFICIAL FLAVORS COLORED FROM NATURAL SOURCES MADE WITH REAL CREAM</p> <p>Yelloh!</p> <p>CONES: 11 CONES NET WT 4.9 LB</p>	<p>DATE CODE AREA</p>   <p>NO ARTIFICIAL FLAVORS COLORED FROM NATURAL SOURCES MADE WITH REAL CREAM</p> <p>Yelloh!</p> <p>CONES: 11 CONES NET WT 4.9 LB</p>
 <p>Classic Vanilla Nut SUNDAE CONES</p> <p>Vanilla ice cream topped with cookie crumbles, crushed pecans and fudge in a chocolatey lined sugar cone</p> <p>49.8 FL. OZ. (1.47L)</p> <p>NO ARTIFICIAL FLAVORS COLORED FROM NATURAL SOURCES MADE WITH REAL CREAM</p> <p>Yelloh!</p> <p>CONES: 11 CONES NET WT 4.9 LB</p>	 <p>Vanilla Fudge SUNDAE CONES</p> <p>Vanilla ice cream swirled with fudge and topped with chocolate chips in a chocolatey lined sugar cone</p> <p>49.8 FL. OZ. (1.47L)</p> <p>NO ARTIFICIAL FLAVORS COLORED FROM NATURAL SOURCES MADE WITH REAL CREAM</p> <p>Yelloh!</p> <p>CONES: 11 CONES NET WT 4.9 LB</p>
<p>DATE CODE AREA</p>   <p>NO ARTIFICIAL FLAVORS COLORED FROM NATURAL SOURCES MADE WITH REAL CREAM</p> <p>Yelloh!</p> <p>CONES: 11 CONES NET WT 4.9 LB</p>	<p>DATE CODE AREA</p>   <p>NO ARTIFICIAL FLAVORS COLORED FROM NATURAL SOURCES MADE WITH REAL CREAM</p> <p>Yelloh!</p> <p>CONES: 11 CONES NET WT 4.9 LB</p>

Yelloh! Cookies & Cream
Ice Cream Sandwiches

Nutrition Facts	
Serving Size 1 Sandwich (11g)	
Calories 230	
% Daily Value*	
Total Fat	10g
Sodium	100mg
Total Sugar	15g
Total Protein	5g

*Percent Daily Values are based on a diet of other people's secrets.

Yelloh! Chocolate Chip
Cookie Sandwich

Nutrition Facts	
Serving Size 1 Sandwich (11g)	
Calories 270	
% Daily Value*	
Total Fat	10g
Sodium	100mg
Total Sugar	15g
Total Protein	5g

*Percent Daily Values are based on a diet of other people's secrets.

Yelloh! Cookies & Cream Ice Cream Sandwiches

NO ARTIFICIAL FLAVORS
MADE WITH REAL CREAM

230 CALORIES

Yelloh! Cookies & Cream Ice Cream Sandwiches

Cookies and cream ice cream between two chocolate cookies

24 FL. OZ. (709mL)

CONTAINS 6 SANDWICHES • CHIPPED

#370

cookies & Cream Ice Cream Sandwiches

Yelloh! Chocolate Chip Cookie Sandwich

NO ARTIFICIAL FLAVORS
COLORS FROM NATURAL SOURCES
MADE WITH REAL CREAM

270 CALORIES

Yelloh! Chocolate Chip Cookie Sandwich

Vanilla ice cream between two chocolate chip cookies

2 FL. OZ. (107mL)

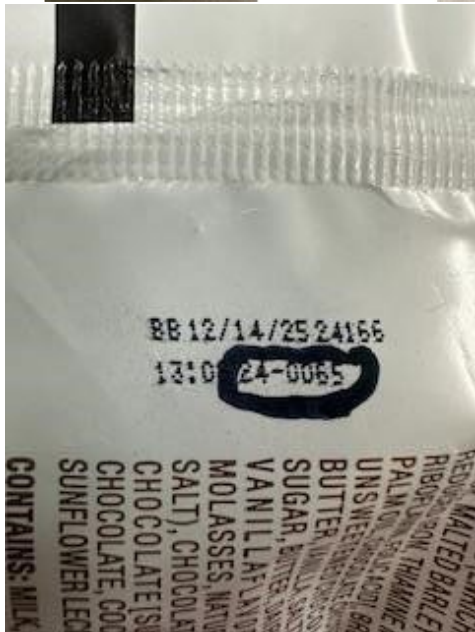
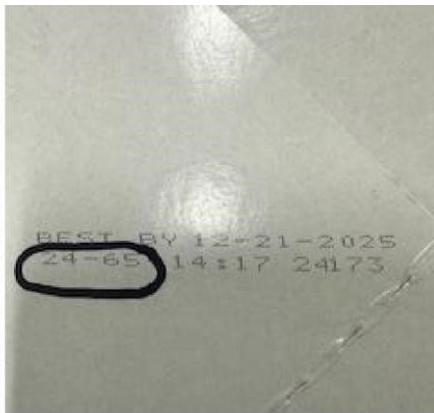
#371

Chocolate Chip Cookie Sandwich



ChipWich Products





LaSalle Products

LaSalle Flavors



Ingredients: Milkfat and Nonfat Milk, Sugar, Pecans (Roasted), Butter & Salt, Corn Syrup, Mono and Diglycerides, Guar Gum, Cellulose Gum, Carrageenan, Natural Flavor, Vanilla Extract, Annatto Color

Allergens: Milk, Peans
Produced on equipment that also processes Peanuts, Tree Nuts and Eggs.
Contains a Bioengineered Food ingredient.

Nutrition Facts	
4 servings per container	
Serving size 1/2 cup (125g)	
Calories 340 1360	
Total Fat 12g 24%	
Saturated Fat 7g 14%	
Cholesterol 25mg 5%	
Sodium 100mg 2%	
Total Sugar 25g 50%	
Total Fat 12g 24%	
Saturated Fat 7g 14%	
Cholesterol 25mg 5%	
Sodium 100mg 2%	
Total Sugar 25g 50%	
Total Fat 12g 24%	
Saturated Fat 7g 14%	
Cholesterol 25mg 5%	
Sodium 100mg 2%	
Total Sugar 25g 50%	

71891 37408

LaSalle Flavors



Ingredients: Milkfat and Nonfat Milk, Sugar, Corn Syrup, Mango Purée, Mono and Diglycerides, Guar Gum, Modified Cellulose, Carrageenan, and 40 Natural Flavor, Vanilla Extract, Annatto Color, Citric Acid

Allergens: Milk
Produced on equipment that also processes Peanuts, Tree Nuts and Eggs.
Contains a Bioengineered Food ingredient.

Nutrition Facts	
4 servings per container	
Serving size 1/2 cup (125g)	
Calories 190 760	
Total Fat 12g 24%	
Saturated Fat 7g 14%	
Cholesterol 25mg 5%	
Sodium 100mg 2%	
Total Sugar 25g 50%	
Total Fat 12g 24%	
Saturated Fat 7g 14%	
Cholesterol 25mg 5%	
Sodium 100mg 2%	
Total Sugar 25g 50%	
Total Fat 12g 24%	
Saturated Fat 7g 14%	
Cholesterol 25mg 5%	
Sodium 100mg 2%	
Total Sugar 25g 50%	

71891 37416

LaSalle Flavors



Ingredients: Milkfat and Nonfat Milk, Black Cherries, Cherrys, High Fructose Corn Syrup, Corn Syrup, Natural Flavor, Citric Acid, Red 40, Blue 1, Sugar, Corn Syrup, Mono and Diglycerides, Guar Gum, Cellulose Gum, Carrageenan, Natural Flavor (Annatto Color)

Allergens: Milk, Wheat
Produced on equipment that also processes Peanuts, Tree Nuts and Eggs.
Contains a Bioengineered Food ingredient.

Nutrition Facts	
4 servings per container	
Serving size 1/2 cup (125g)	
Calories 260 1040	
Total Fat 12g 24%	
Saturated Fat 7g 14%	
Cholesterol 25mg 5%	
Sodium 100mg 2%	
Total Sugar 25g 50%	
Total Fat 12g 24%	
Saturated Fat 7g 14%	
Cholesterol 25mg 5%	
Sodium 100mg 2%	
Total Sugar 25g 50%	
Total Fat 12g 24%	
Saturated Fat 7g 14%	
Cholesterol 25mg 5%	
Sodium 100mg 2%	
Total Sugar 25g 50%	

71891 37410

LaSalle Flavors




Ingredients: Milkfat and Nonfat Milk, Caramel Sauce (Sugar, Corn Syrup, Water, Mono- & Di-, Salt, Potassium Sorbate, Sugar, Corn Syrup, Maltose, Mono and Diglycerides, Guar Gum, Cellulose Gum, Carrageenan, Vanilla Extract, Natural Flavor, Caramel Color, Annatto Color)

Allergens: Milk
Produced on equipment that also processes Peanuts, Tree Nuts and Eggs.
Contains a Bioengineered Food ingredient.

Nutrition Facts	
4 servings per container	
Serving size 1/2 cup (125g)	
Calories 280 1120	
Total Fat 12g 24%	
Saturated Fat 7g 14%	
Cholesterol 25mg 5%	
Sodium 100mg 2%	
Total Sugar 25g 50%	
Total Fat 12g 24%	
Saturated Fat 7g 14%	
Cholesterol 25mg 5%	
Sodium 100mg 2%	
Total Sugar 25g 50%	
Total Fat 12g 24%	
Saturated Fat 7g 14%	
Cholesterol 25mg 5%	
Sodium 100mg 2%	
Total Sugar 25g 50%	

71891 37415

LaSalle Flavors




Ingredients: Milkfat and Nonfat Milk, Fudge Layer (Corn Syrup, High Fructose Corn Syrup, Butter, Milk, Chocolate), White Sugar, Cocoa (Processed with Alkali), Peanuts, Mono and Diglycerides, Salt, Ice Vanillin, Vanilla Gum, Natural Flavor (20% 40% Sugar, Corn Syrup, Mono and Diglycerides, Guar Gum, Cellulose Gum, Carrageenan, Vanilla Extract, Annatto Color)

Allergens: Milk, Soybean
Produced on equipment that also processes Peanuts, Tree Nuts and Eggs.
Contains a Bioengineered Food ingredient.

Nutrition Facts	
4 servings per container	
Serving size 1/2 cup (125g)	
Calories 280 1120	
Total Fat 12g 24%	
Saturated Fat 7g 14%	
Cholesterol 25mg 5%	
Sodium 100mg 2%	
Total Sugar 25g 50%	
Total Fat 12g 24%	
Saturated Fat 7g 14%	
Cholesterol 25mg 5%	
Sodium 100mg 2%	
Total Sugar 25g 50%	
Total Fat 12g 24%	
Saturated Fat 7g 14%	
Cholesterol 25mg 5%	
Sodium 100mg 2%	
Total Sugar 25g 50%	

71891 37420

LaSalle Flavors



Ingredients: Milkfat and Nonfat Milk, Strawberry Flavour, Water, Corn Starch, Citric Acid, Sugar, Corn Syrup, Mono and Diglycerides, Guar Gum, Cellulose Gum, Carrageenan, Red 40, Natural Flavor

Allergens: Milk
Produced on equipment that also processes Peanuts, Tree Nuts and Eggs.
Contains a Bioengineered Food ingredient.

Nutrition Facts	
4 servings per container	
Serving size 1/2 cup (125g)	
Calories 240 960	
Total Fat 12g 24%	
Saturated Fat 7g 14%	
Cholesterol 25mg 5%	
Sodium 100mg 2%	
Total Sugar 25g 50%	
Total Fat 12g 24%	
Saturated Fat 7g 14%	
Cholesterol 25mg 5%	
Sodium 100mg 2%	
Total Sugar 25g 50%	
Total Fat 12g 24%	
Saturated Fat 7g 14%	
Cholesterol 25mg 5%	
Sodium 100mg 2%	
Total Sugar 25g 50%	

71891 37418

LaSalle Flavors



Ingredients: Milkfat and Nonfat Milk, Sugar, Cocoa (Processed with Alkali), Flour, Wheat, Hydrolyzed Soybean Monoglyceride (Phosphate Buffer Salts), Partially Hydrogenated Soybean Oil (Soybean Oil), Citric Acid, Natural Flavor (20% 40% Sugar, Corn Syrup, Mono and Diglycerides, Guar Gum, Cellulose Gum, Carrageenan, Vanilla Extract, Annatto Color), Chocolate, Baking Soda, Artificially Flavored, Soy Lecithin, Mono and Diglycerides, Guar Gum, Cellulose Gum, Carrageenan

Allergens: Milk, Wheat, Soybean
Produced on equipment that also processes Peanuts, Tree Nuts and Eggs.
Contains a Bioengineered Food ingredient.

Nutrition Facts	
4 servings per container	
Serving size 1/2 cup (125g)	
Calories 290 1160	
Total Fat 12g 24%	
Saturated Fat 7g 14%	
Cholesterol 25mg 5%	
Sodium 100mg 2%	
Total Sugar 25g 50%	
Total Fat 12g 24%	
Saturated Fat 7g 14%	
Cholesterol 25mg 5%	
Sodium 100mg 2%	
Total Sugar 25g 50%	
Total Fat 12g 24%	
Saturated Fat 7g 14%	
Cholesterol 25mg 5%	
Sodium 100mg 2%	
Total Sugar 25g 50%	

71891 37413

LaSalle Flavors



Ingredients: Milkfat and Nonfat Milk, Sugar, Corn Syrup, Mono and Diglycerides, Guar Gum, Cellulose Gum, Carrageenan, Vanilla Extract, Annatto Color

Allergens: Milk
Produced on equipment that also processes Peanuts, Tree Nuts and Eggs.
Contains a Bioengineered Food ingredient.

Nutrition Facts	
4 servings per container	
Serving size 1/2 cup (125g)	
Calories 270 1080	
Total Fat 12g 24%	
Saturated Fat 7g 14%	
Cholesterol 25mg 5%	
Sodium 100mg 2%	
Total Sugar 25g 50%	
Total Fat 12g 24%	
Saturated Fat 7g 14%	
Cholesterol 25mg 5%	
Sodium 100mg 2%	
Total Sugar 25g 50%	
Total Fat 12g 24%	
Saturated Fat 7g 14%	
Cholesterol 25mg 5%	
Sodium 100mg 2%	
Total Sugar 25g 50%	

71891 37421

LaSalle Flavors



Ingredients: WHOLE MILK CHOCOLATE, Sugar, Cream, Cocoa Processed with Alkali, Mono and Diglycerides, Blue Dye, Colored with Natural Pigments.

Allergens: Milk
 Produced in a facility that also processes: Peanuts, Tree Nuts and Eggs.
 Contains a 8 ingredients Food Ingredient.



Nutrition Facts
 1/2 cup (125g) per container 2 cups (500g)

Serving Size		Per serving		Per container	
		Amount	% Daily Value*	Amount	% Daily Value*
Calories		270	1080		
Total Fat	12g	24%	48%	48g	96%
Total Crap	12g	24%	48%	48g	96%
Total Sugar	20g	40%	80%	80g	160%
Total Protein	2g	4%	8%	8g	16%
Total Cholesterol	10g	20%	40%	40g	80%
Total Sodium	10g	20%	40%	40g	80%
Total Fat	12g	24%	48%	48g	96%
Total Crap	12g	24%	48%	48g	96%
Total Sugar	20g	40%	80%	80g	160%
Total Protein	2g	4%	8%	8g	16%
Total Cholesterol	10g	20%	40%	40g	80%
Total Sodium	10g	20%	40%	40g	80%

